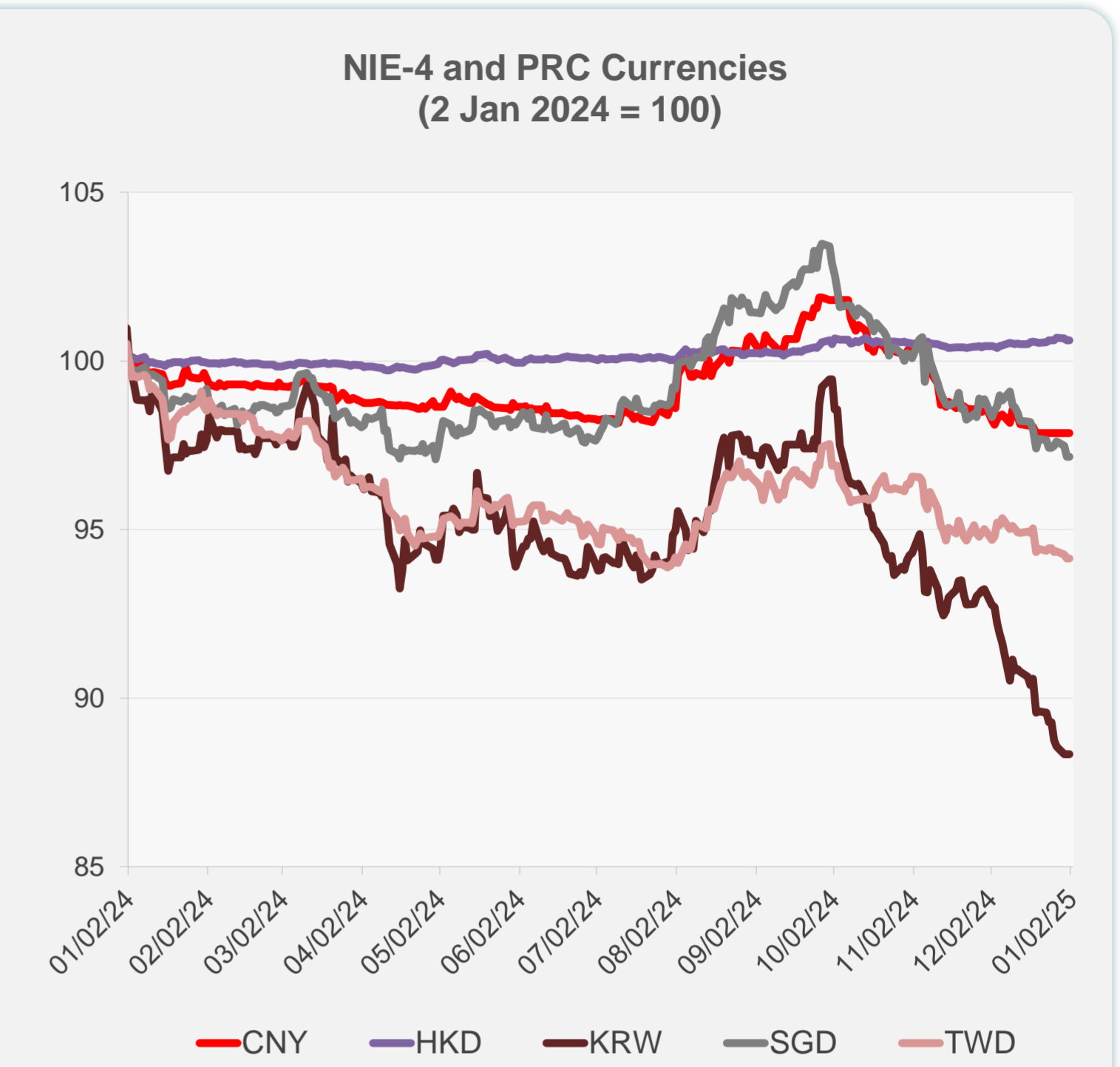
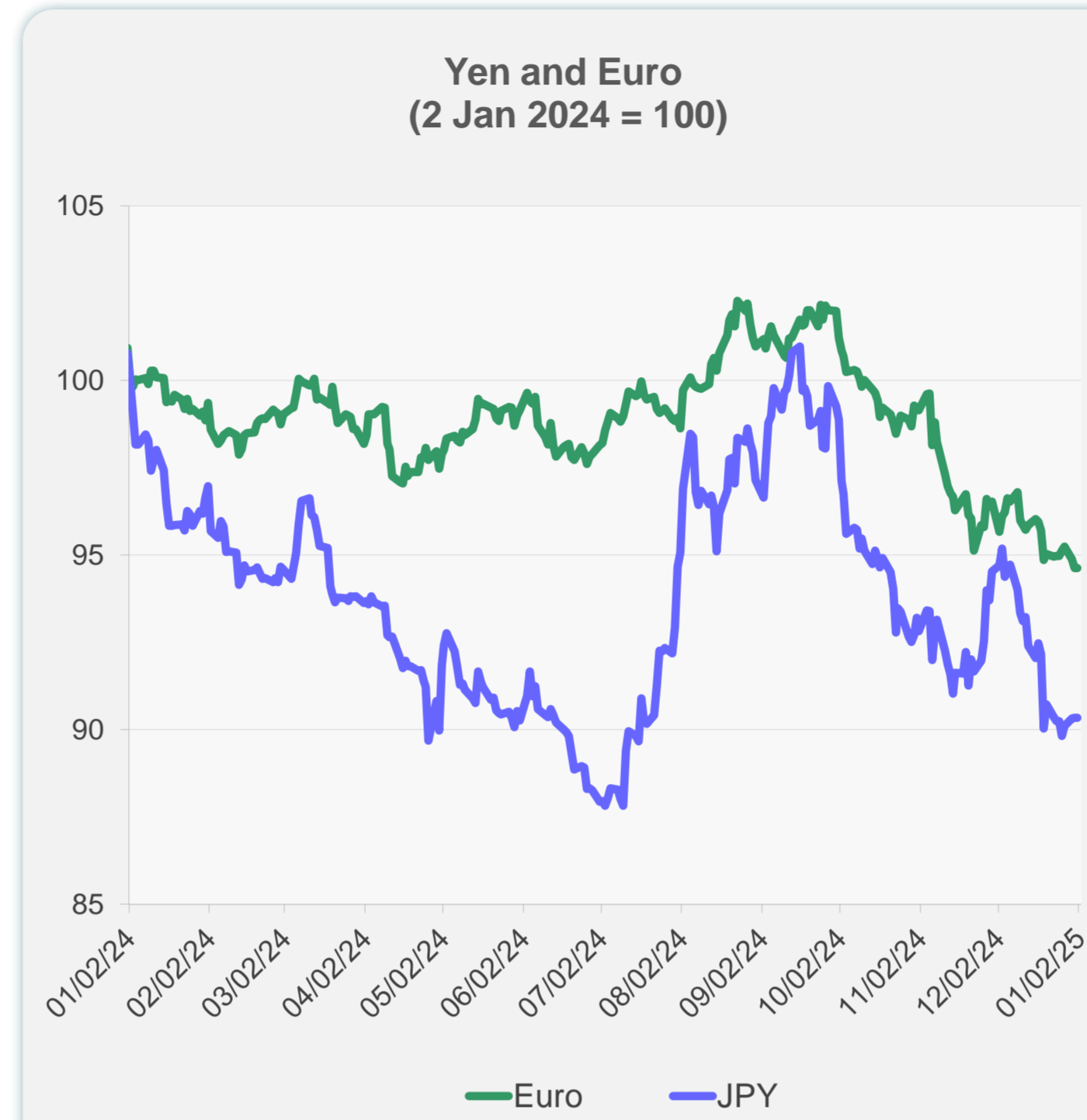
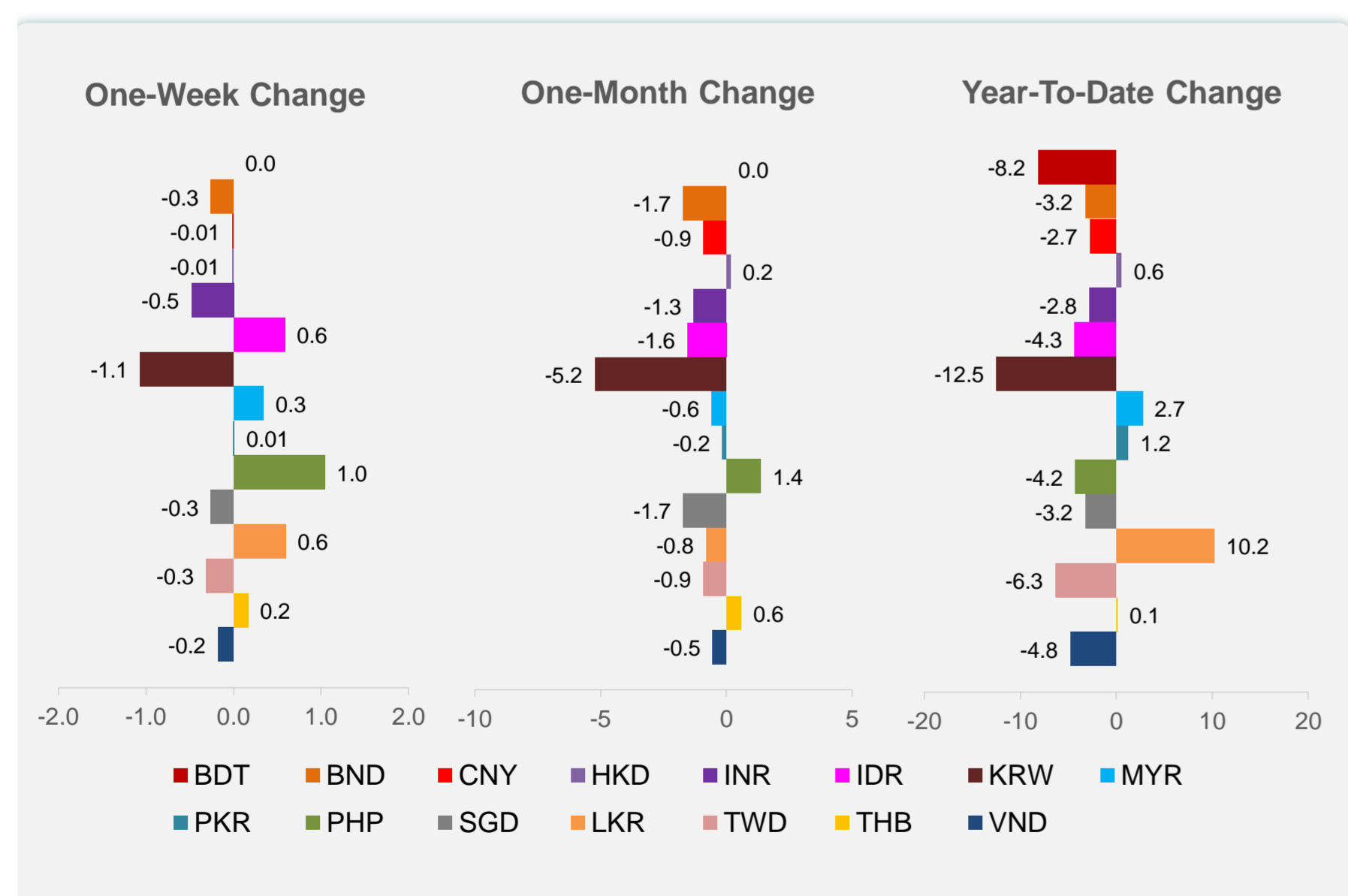
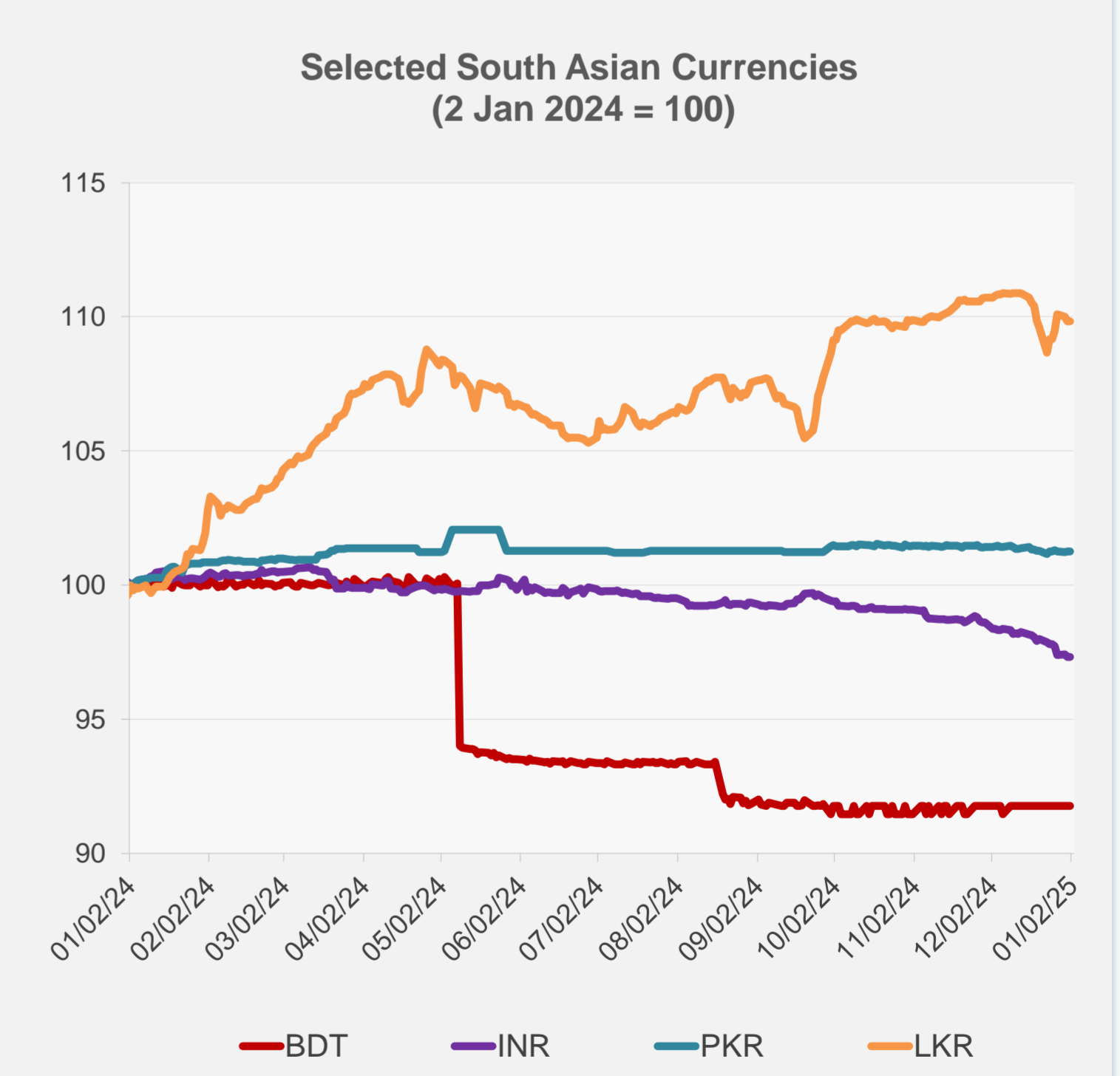
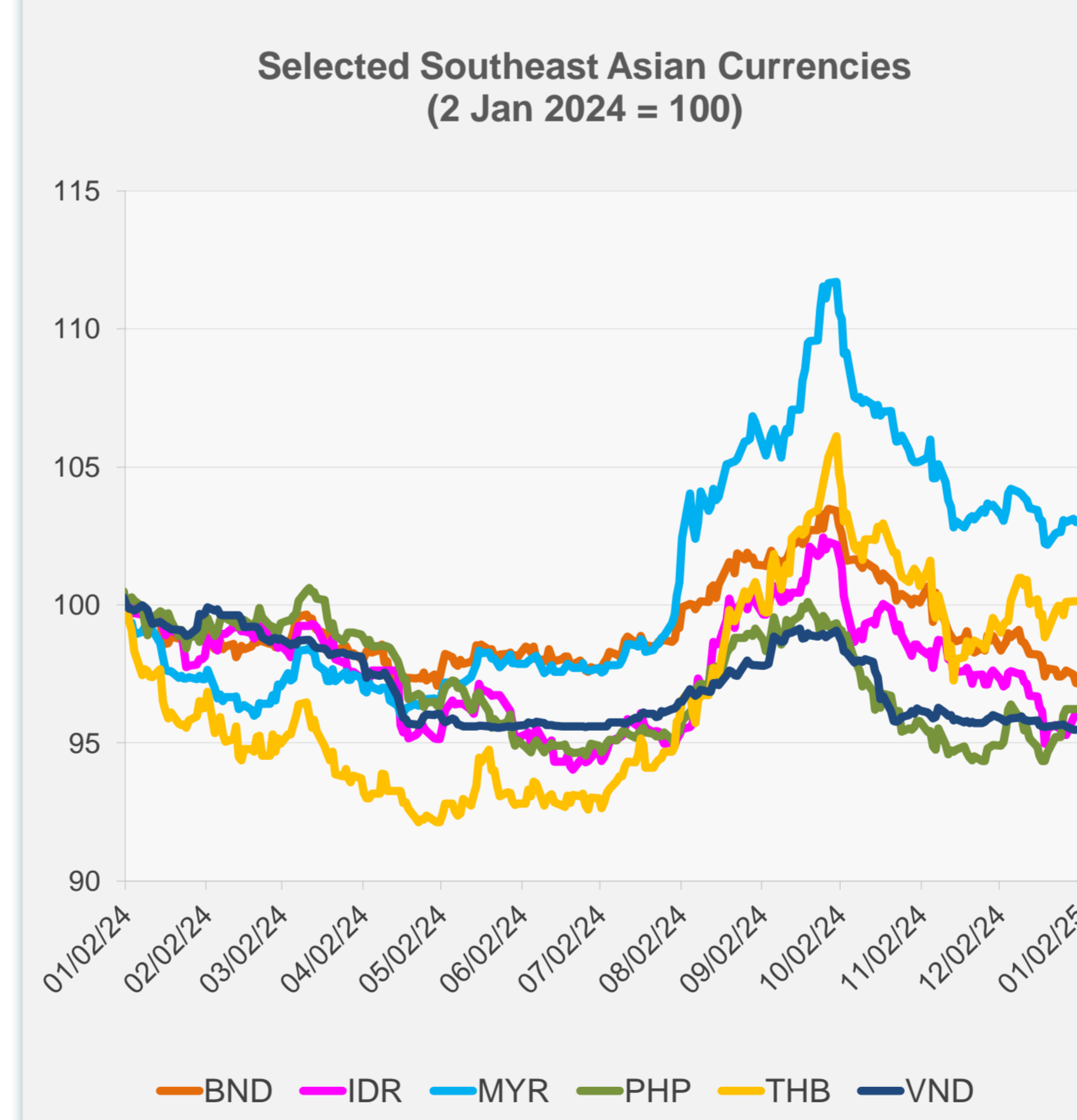


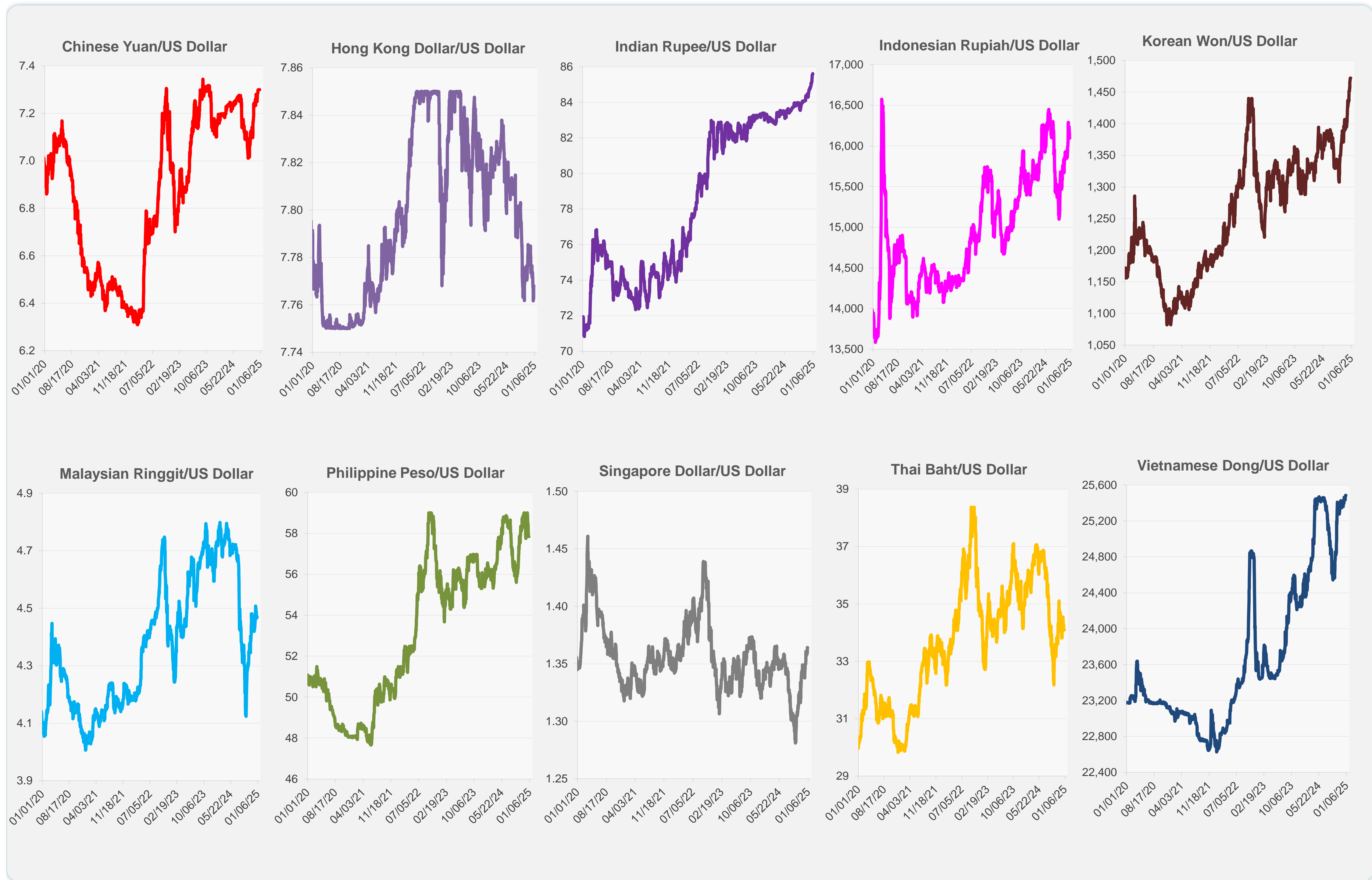
|                              | Latest Closing | % change from Previous Day | % change from 01-Jan-24 |
|------------------------------|----------------|----------------------------|-------------------------|
| Euro                         | 0.97           | 0.00                       | -6.25                   |
| Japanese yen (JPY)           | 157.16         | 0.00                       | -10.35                  |
| Bangladeshi taka (BDT)       | 119.50         | 0.00                       | -8.16                   |
| Brunei dollar (BND)          | 1.36           | 0.00                       | -3.22                   |
| Chinese yuan (CNY)           | 7.30           | 0.00                       | -2.73                   |
| Hong Kong dollar (HKD)       | 7.77           | 0.00                       | 0.56                    |
| Indian rupee (INR)           | 85.61          | 0.00                       | -2.78                   |
| Indonesian rupiah (IDR)      | 16,095.00      | 0.00                       | -4.34                   |
| Korean won (KRW)             | 1,472.15       | 0.00                       | -12.50                  |
| Malaysian ringgit (MYR)      | 4.47           | 0.00                       | 2.74                    |
| Pakistan rupee (PKR)         | 278.38         | 0.00                       | 1.24                    |
| Philippine peso (PHP)        | 57.85          | 0.00                       | -4.25                   |
| Singapore dollar (SGD)       | 1.36           | 0.00                       | -3.22                   |
| Sri Lanka rupee (LKR)        | 293.00         | 0.00                       | 10.23                   |
| Taipei,China NT dollar (TWD) | 32.78          | 0.00                       | -6.33                   |
| Thai baht (THB)              | 34.10          | 0.00                       | 0.13                    |
| Vietnamese dong (VND)        | 25,485.00      | 0.00                       | -4.78                   |



NIE = Newly Industrialized Economies



Note: Negative/Decreasing values indicate depreciation of local currency, and positive/increasing values indicate appreciation.  
Source: ADB calculations using data from Haver Analytics.

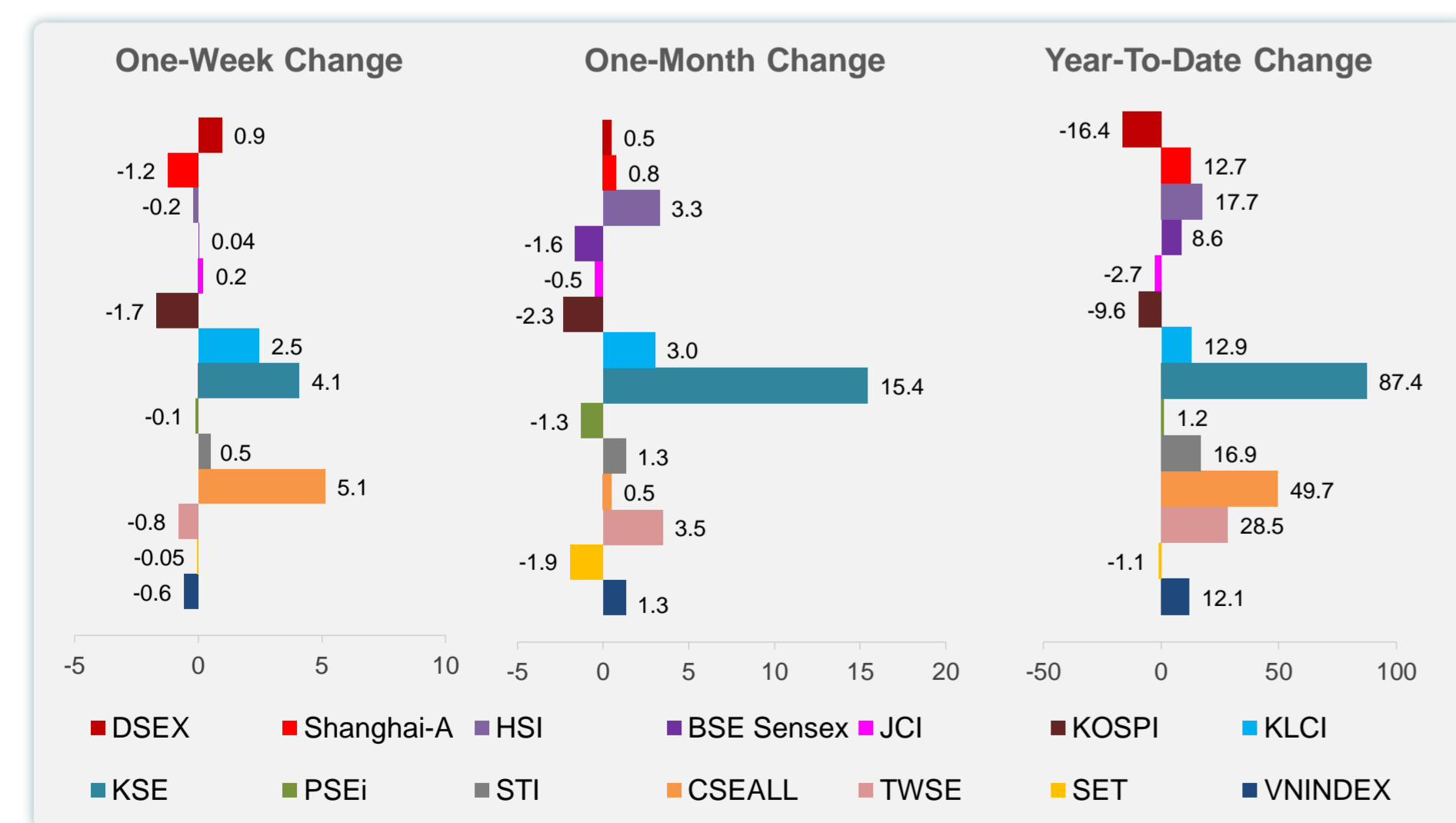
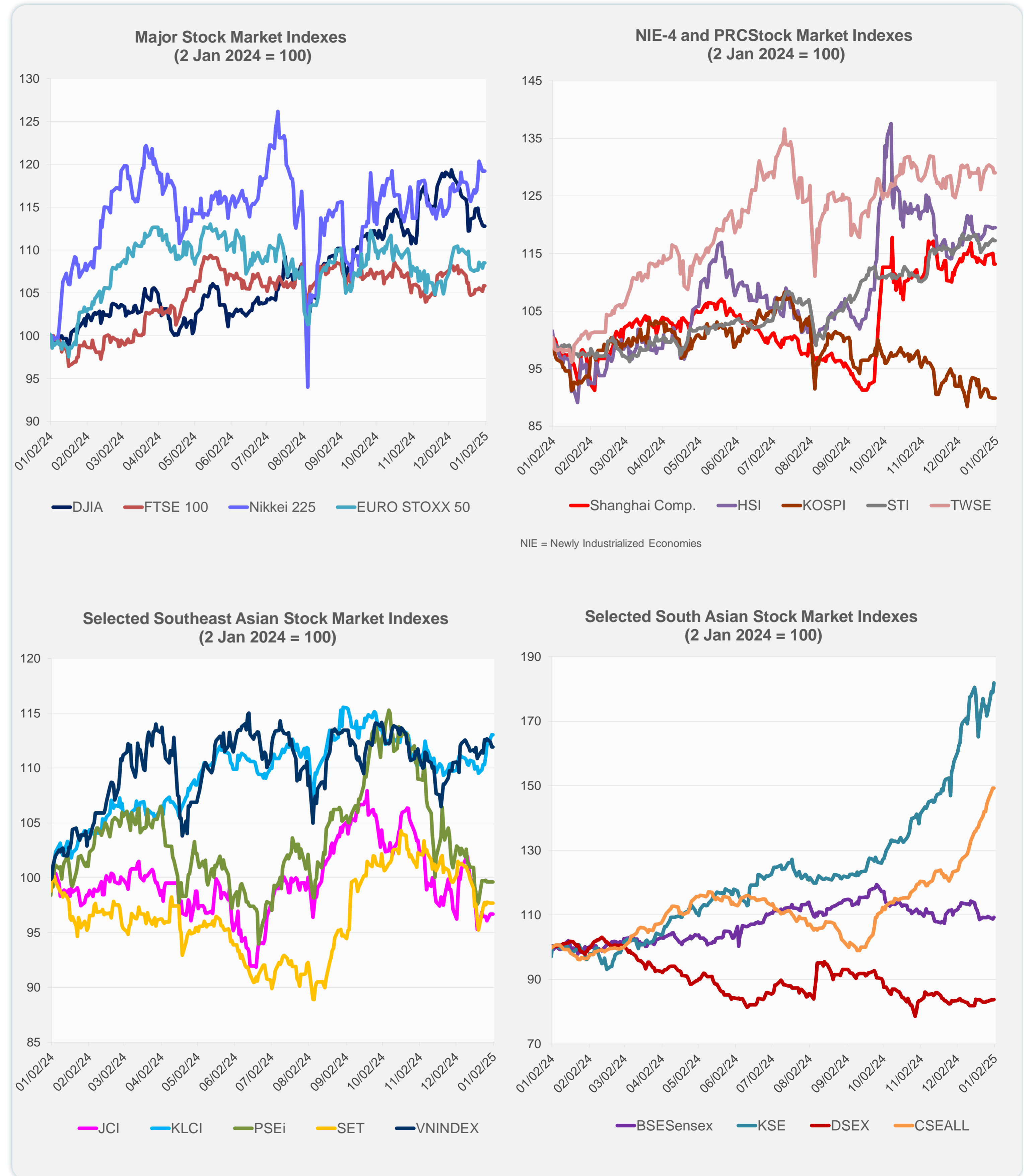


Source: Haver Analytics.

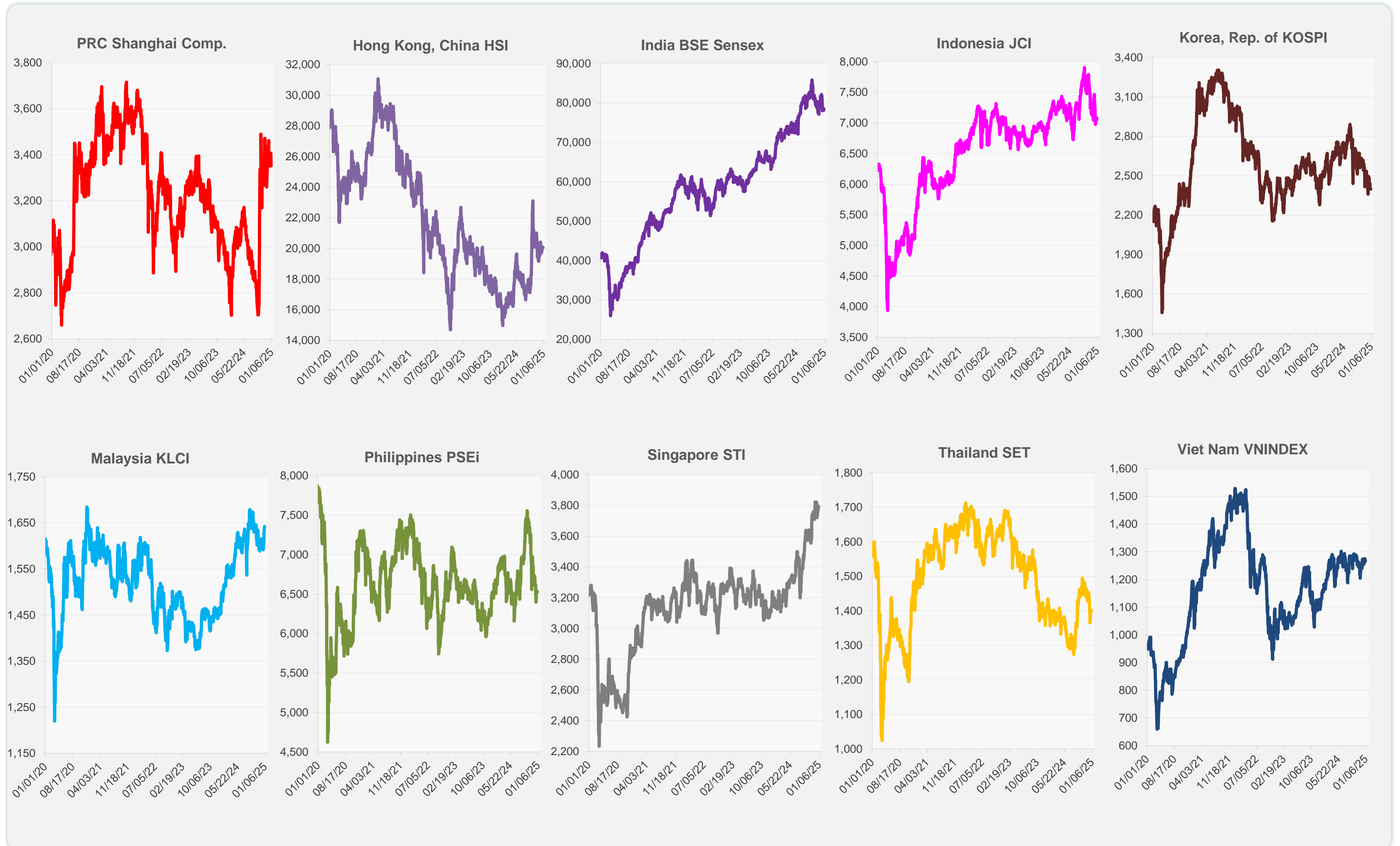
Daily Market Watch  
**STOCK INDEXES**

2 January 2025, 9:00 AM Manila

|                      | Latest Closing | % change from Previous Day | % change from 01-Jan-24 |
|----------------------|----------------|----------------------------|-------------------------|
| US Dow Jones Ind Avg | 42,544.22      | 0.00                       | 12.88                   |
| US NASDAQ            | 19,310.79      | 0.00                       | 28.64                   |
| US S&P 500           | 5,881.63       | 0.00                       | 23.31                   |
| UK FTSE 100          | 8,173.02       | 0.00                       | 5.69                    |
| EURO STOXX 50        | 4,895.98       | 0.00                       | 8.28                    |
| Japan NIKKEI 225     | 39,894.54      | 0.00                       | 19.22                   |
| Bangladesh DSEX      | 5,218.16       | 0.03                       | -16.41                  |
| PRC Shanghai Comp.   | 3,351.76       | 0.00                       | 12.67                   |
| Hong Kong, China HSI | 20,059.95      | 0.00                       | 17.67                   |
| India BSE Sensex     | 78,507.41      | 0.47                       | 8.63                    |
| Indonesia JCI        | 7,079.91       | 0.00                       | -2.65                   |
| Korea, Rep. of KOSPI | 2,399.49       | 0.00                       | -9.63                   |
| Malaysia KLCI        | 1,642.33       | 0.00                       | 12.90                   |
| Pakistan KSE 100     | 117,008.08     | 1.63                       | 87.36                   |
| Philippines PSEi     | 6,528.79       | 0.00                       | 1.22                    |
| Singapore STI        | 3,787.60       | 0.00                       | 16.89                   |
| Sri Lanka CSEALL     | 15,944.61      | 0.00                       | 49.66                   |
| Taipei, China TWSE   | 23,035.10      | 0.00                       | 28.47                   |
| Thailand SET         | 1,400.21       | 0.00                       | -1.10                   |
| Viet Nam VNINDEX     | 1,266.78       | 0.00                       | 12.11                   |



Sources: ADB calculations using data from CEIC Data Company and Haver Analytics.



Sources: CEIC Data Company and Haver Analytics.

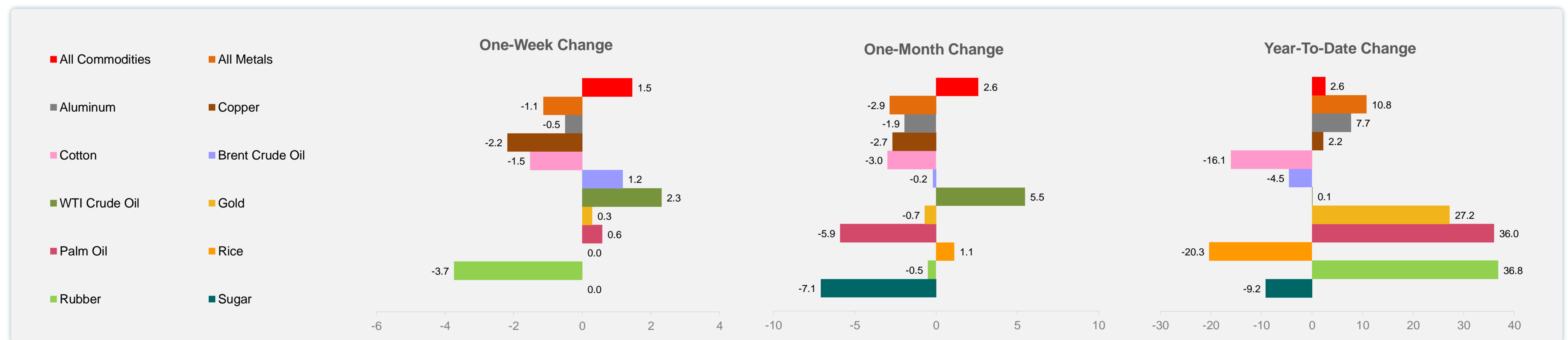
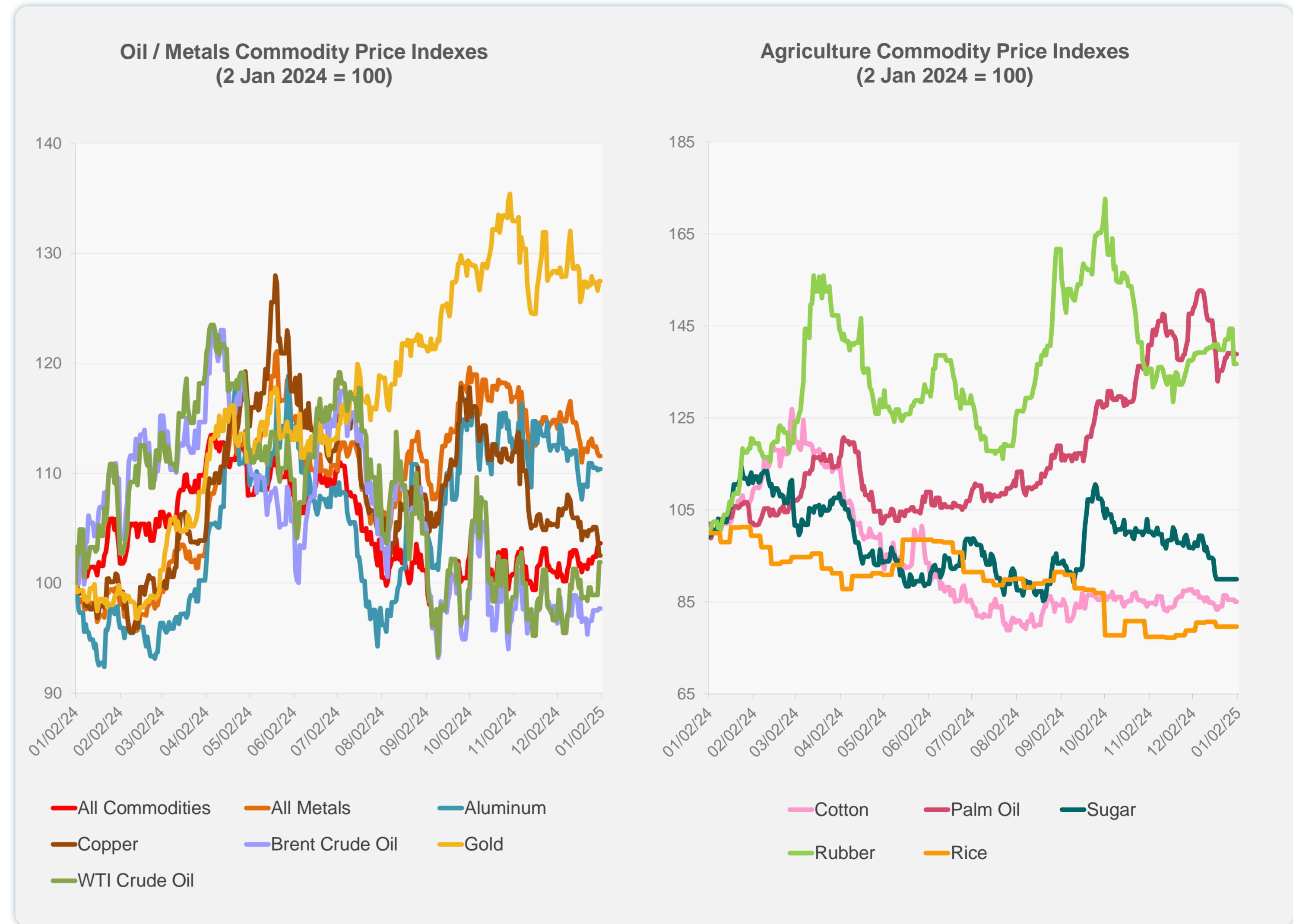
Daily Market Watch  
**COMMODITY PRICES**

2 January 2025, 9:00 AM Manila

|                     | Unit              | Latest Closing | % change from Previous Day | % change from 01-Jan-24 |
|---------------------|-------------------|----------------|----------------------------|-------------------------|
| S&P All Commodities | US\$              | 549.64         | 0.00                       | 2.61                    |
| S&P All Metals      | US\$              | 307.38         | 0.00                       | 10.80                   |
| Aluminum            | US\$/metric ton   | 2,526.78       | 0.00                       | 7.73                    |
| Copper              | US\$/metric ton   | 8,652.67       | 0.00                       | 2.23                    |
| Cotton              | US cents/lb       | 65.90          | 0.00                       | -16.05                  |
| Brent Crude Oil     | US\$/barrel       | 74.11          | 0.00                       | -4.50                   |
| WTI Crude Oil       | US\$/barrel       | 71.72          | 0.00                       | 0.10                    |
| Gold                | US\$/troy oz      | 2,624.50       | 0.00                       | 27.22                   |
| Palm Oil            | US\$/metric tonne | 1,100.13       | 0.00                       | 35.99                   |
| Rice <sup>1</sup>   | US\$/metric ton   | 537.00         | 0.00                       | -20.33                  |
| Rubber <sup>2</sup> | US\$/kg           | 236.80         | 0.00                       | 36.80                   |
| Sugar               | US cents/lb       | 18.59          | 0.00                       | -9.18                   |

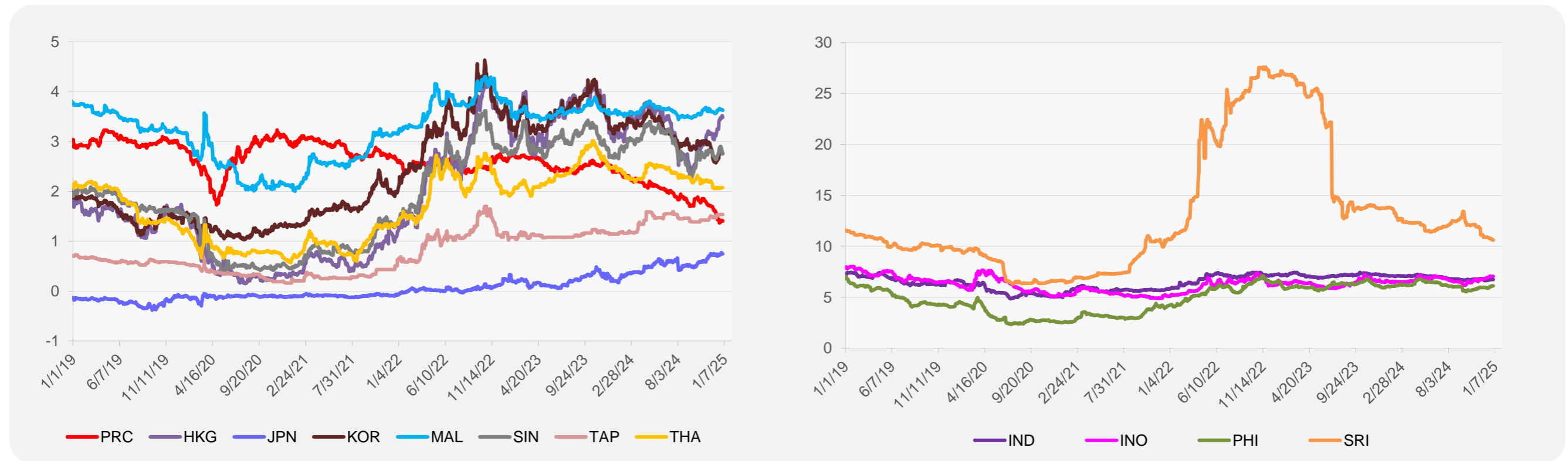
<sup>1</sup> Latest closing price from 18 December 2024.

<sup>2</sup> Singapore Exchange, Ribbed Smoked Sheet Rubber.

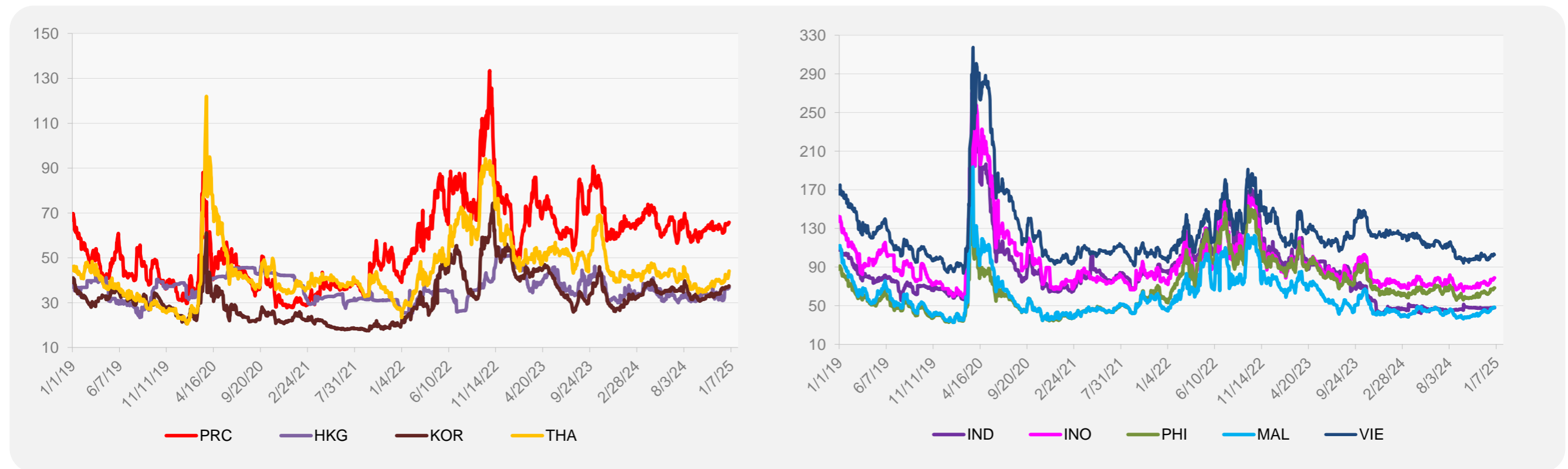


Source: ADB calculations using data from Bloomberg.

### 5-YEAR LOCAL CURRENCY GOVERNMENT BOND YIELDS (%)



### 5-YEAR CREDIT DEFAULT SWAP<sup>1</sup>



<sup>1</sup> In USD and based on sovereign bonds.  
Source: ADB calculations using data from Bloomberg.